

1. MANISCALCO STEFANO (12RM0122,12 LAZ)
2. PULEO FRANCESCO (09FI0043,09 TOS)
3. TONI CHRISTIAN (12RM3000,12 LAZ)
3. LONGOBARDI PASQUALE (15NA1486,15 CAM)
5. PANARO LORENZO (15NA1486,15 CAM)
5. BORZI ANGELO (19CT1469,19 SIC)

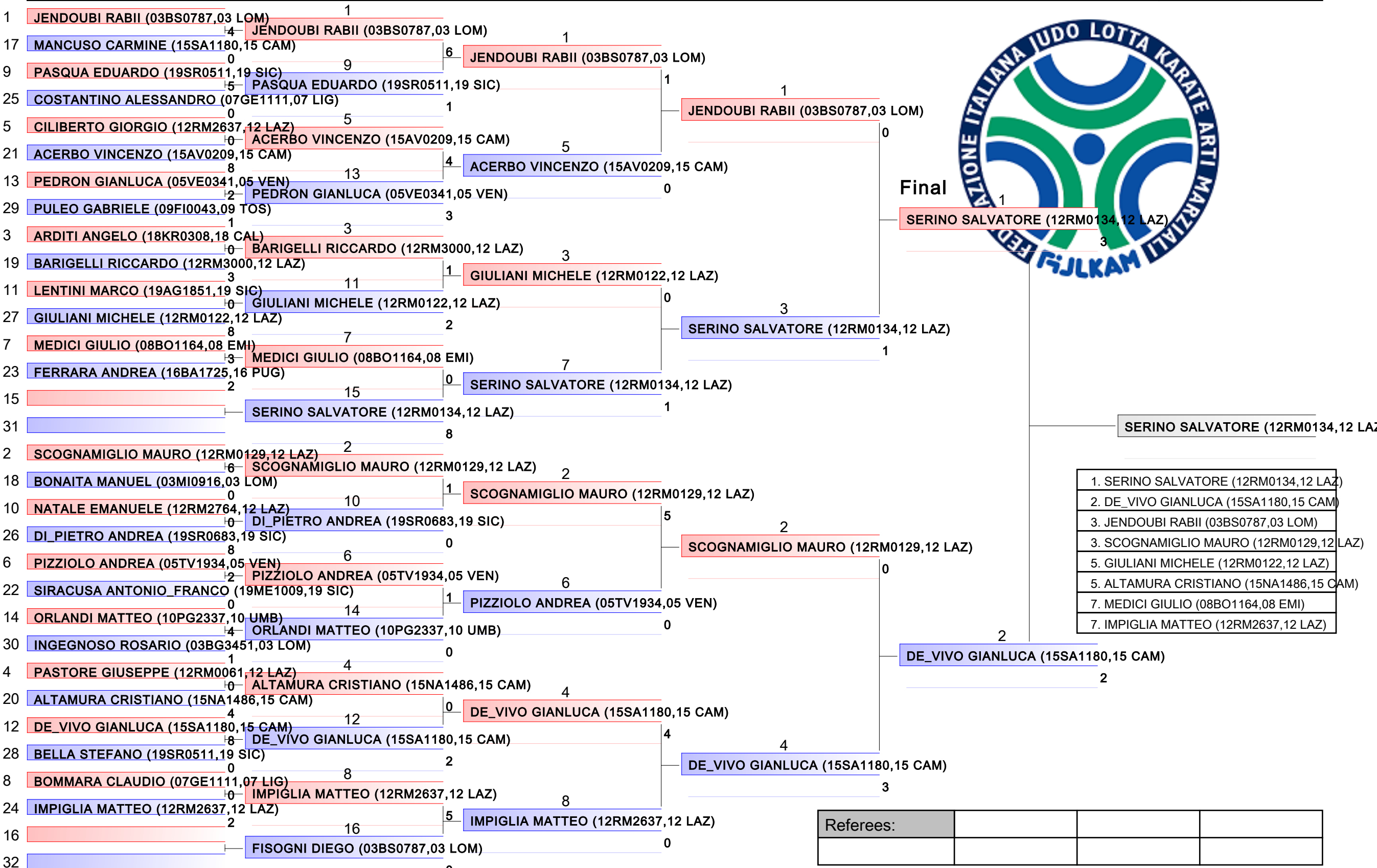
Referees:			

Tatami 1	Pool 1/1
-------------	-------------



1. MARESCA LUCA (15NA2762,15 CAM)
2. VASTOLA ANTONIO (15SA1180,15 CAM)
3. CRESCENZO ANGELO (15SA1180,15 CAM)
3. ALIBRANDI GIUSEPPE (19SR1219,19 SIC)
5. BACHI GIANCARLO (09LI0113,09 TOS)
5. DE_LEO VINCENZO (16BR1653,16 PUG)
7. MANISCALCO GIUSEPPE_DANIELE (19PA0349)
7. CASABLANCA DOMINIK (03BS1203,03 LOM)

Referees:			



1

CLARETTI DAVIDE (03BS0787,03 LOM)

0

33

CERA GABRIELE (12RM3000,12 LAZ)

4

17

17

49

3

9

9

41

9

25

0

57

5

5

5

37

6

21

21

53

0

13

13

45

1

29

29

61

4

3

SPADONI NICOLA (09LI0099,09 TOS)

0

35

BUSA LUIGI (12RM0129,12 LAZ)

9

19

19

51

0

11

11

43

0

27

27

59

5

7

7

39

1

23

23

55

4

15

15

47

1

31

31

63

4

1

CERA GABRIELE (12RM3000,12 LAZ)

0

2

MINUTOLO GIANLUCA (19CT0962,19 SIC)

0

3

MINUTOLO GIANLUCA (19CT0962,19 SIC)

3

4

MINUTOLO GIANLUCA (19CT0962,19 SIC)

0

5

TESORO GIUSEPPE (15NA1486,15 CAM)

5

6

MINARDI ANDREA (01TO3094,01 PIE)

5

7

MINARDI ANDREA (01TO3094,01 PIE)

6

8

DE\_PASCALIS SIMONE (16LE3222,16 PUG)

0

9

TESORO GIUSEPPE (15NA1486,15 CAM)

9

10

TESORO GIUSEPPE (15NA1486,15 CAM)

5

11

MARTINA MICHELE (16BR2023,16 PUG)

0

12

MARTINA MICHELE (16BR2023,16 PUG)

13

13

MARTINA MICHELE (16BR2023,16 PUG)

3

14

BUSA LUIGI (12RM0129,12 LAZ)

3

15

BUSA LUIGI (12RM0129,12 LAZ)

4

16

MINERVINO GIUSEPPE (15CE3003,15 CAM)

0

17

FEDELE LUCA (13AQ2359,13 ABR)

11

18

HASANI MICHELE (03BS1203,03 LOM)

0

19

HASANI MICHELE (03BS1203,03 LOM)

0

20

BONO IGNAZIO (19AG1851,19 SIC)

7

21

CAVALLO SALVATORE (12RM2764,12 LAZ)

0

22

CAVALLO SALVATORE (12RM2764,12 LAZ)

4

23

REZZULLI LUIGI (15AV0209,15 CAM)

15

24

CANTATORE MIRKO (16BA1265,16 PUG)

1

25

CANTATORE MIRKO (16BA1265,16 PUG)

1

26

4

27

1

28

7

29

0

30

7

31

0

32

1

33

1

34

1

35

1

36

1

37

1

38

1

39

1

40

1

41

1

42

1

43

1

44

1

45

1

46

1

47

1

48

1

49

1

50

1

51

1

52

1

53

1

54

1

55

1

56

1

57

1

58

1

59

1

60

1

61

1

62

1

63

1

64

1

65

1

66

1

67

1

68

1

69

1

70

1

71

1

72

1

73

1

74

1

75

1

76

1

77

1

78

1

79

1

80

1

81

1

82

1

83

1

84

1

85

1

86

1

87

1

88

1

89

1

90

1

91

1

92

1

93

1

94

1

95

1

96

1

97

1

98

1

99

1

100

1

1

BUSA LUIGI (12RM0129,12 LAZ)

2

WIERDIS WILLIAM (15NA1486,15 CAM)

3

TESORO GIUSEPPE (15NA1486,15 CAM)

3

GRIMALDI PIERLUIGI (15SA1180,15 CAM)

5

HASANI MICHELE (03BS1203,03 LOM)

5

SARNATARO EMANUELE (15NA1486,15 CAM)

7

CANTATORE MIRKO (16BA1265,16 PUG)

7

RANZETTI ALESSANDRO (03CR0788,03 LOM)

1

BUSA LUIGI (12RM0129,12 LAZ)

2

WIERDIS WILLIAM (15NA1486,15 CAM)

3

TESORO GIUSEPPE (15NA1486,15 CAM)

3

GRIMALDI PIERLUIGI (15SA1180,15 CAM)

5

HASANI MICHELE (03BS1203,03 LOM)

5

SARNATARO EMANUELE (15NA1486,15 CAM)

7

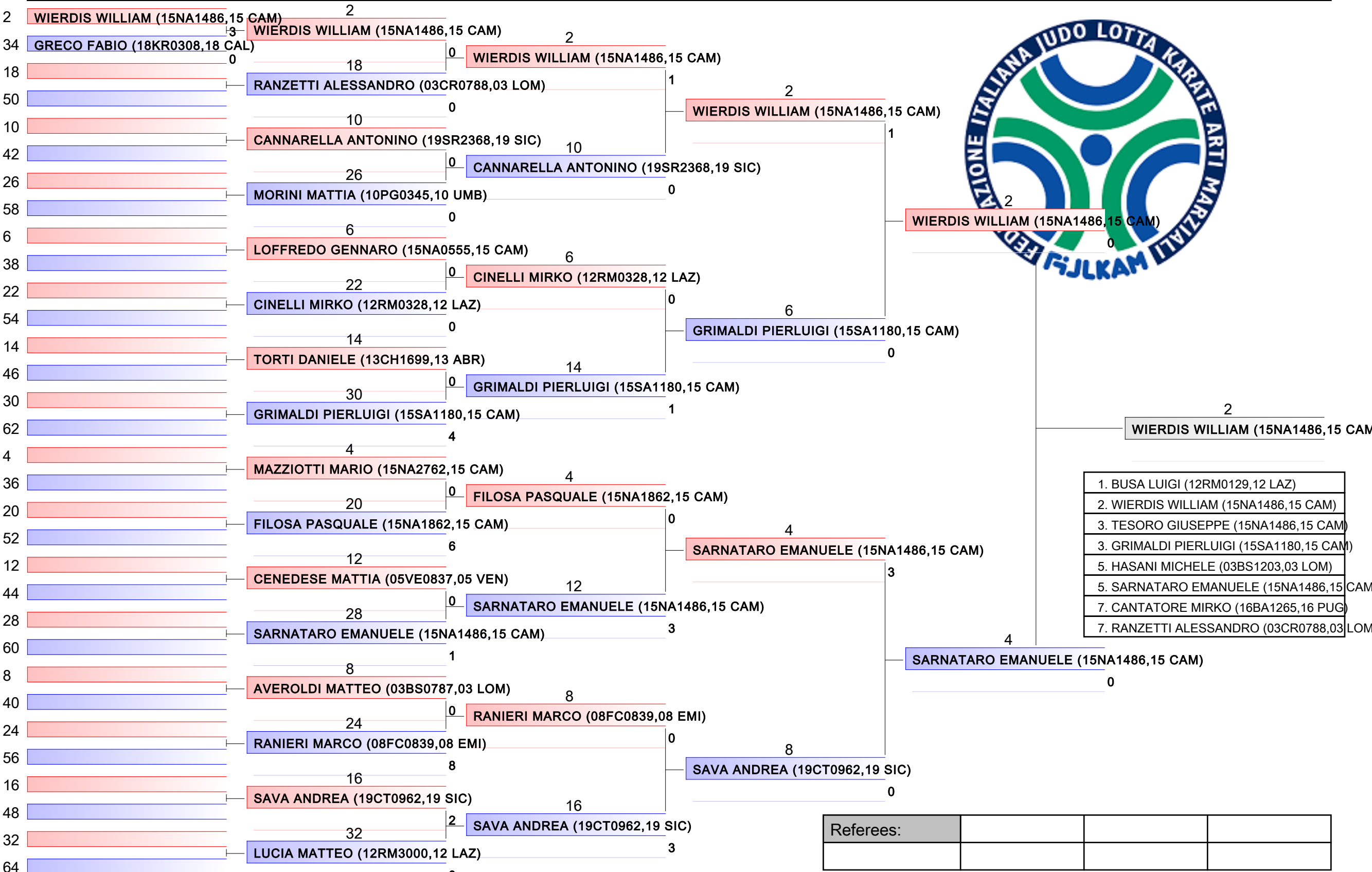
CANTATORE MIRKO (16BA1265,16 PUG)

7

RANZETTI ALESSANDRO (03CR0788,03 LOM)

Referees:

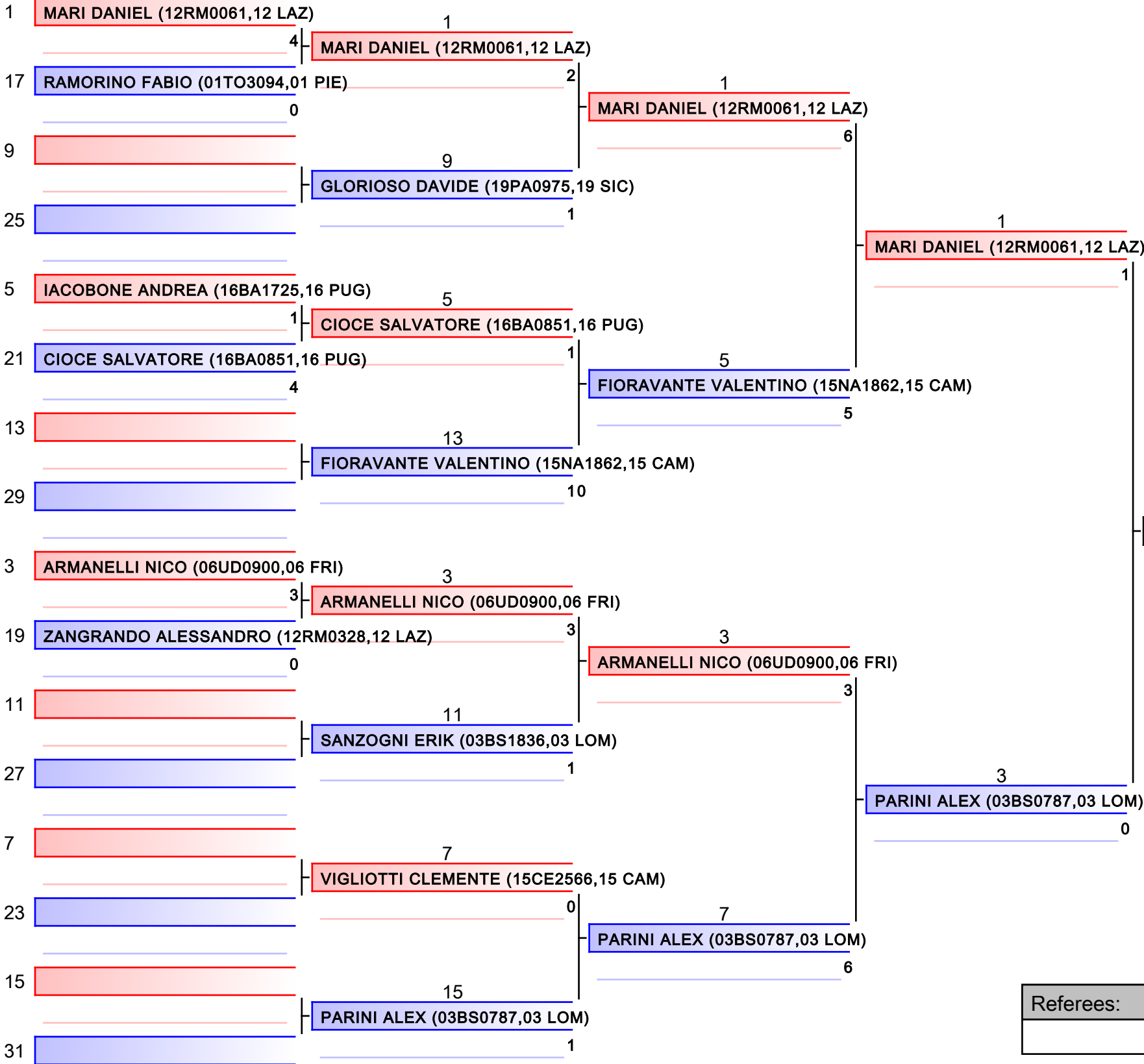




ASS KU M -84 Kg  
49° Campionato Italiano Assoluto M

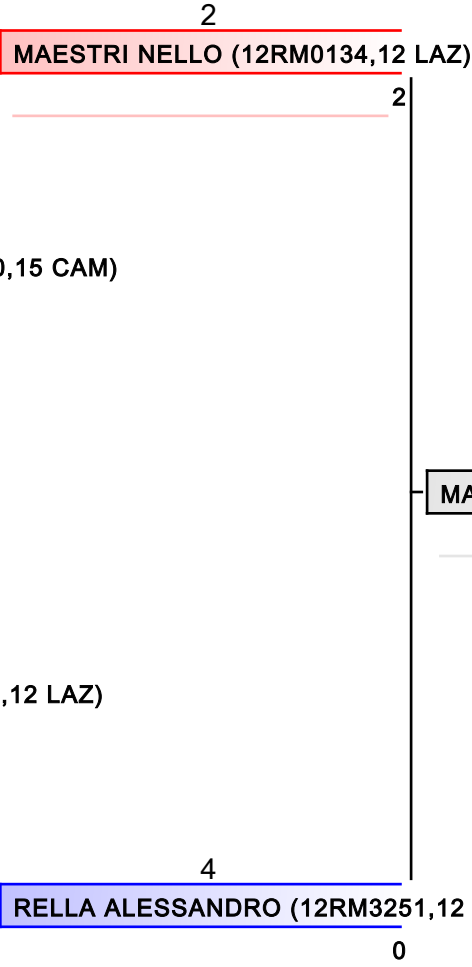
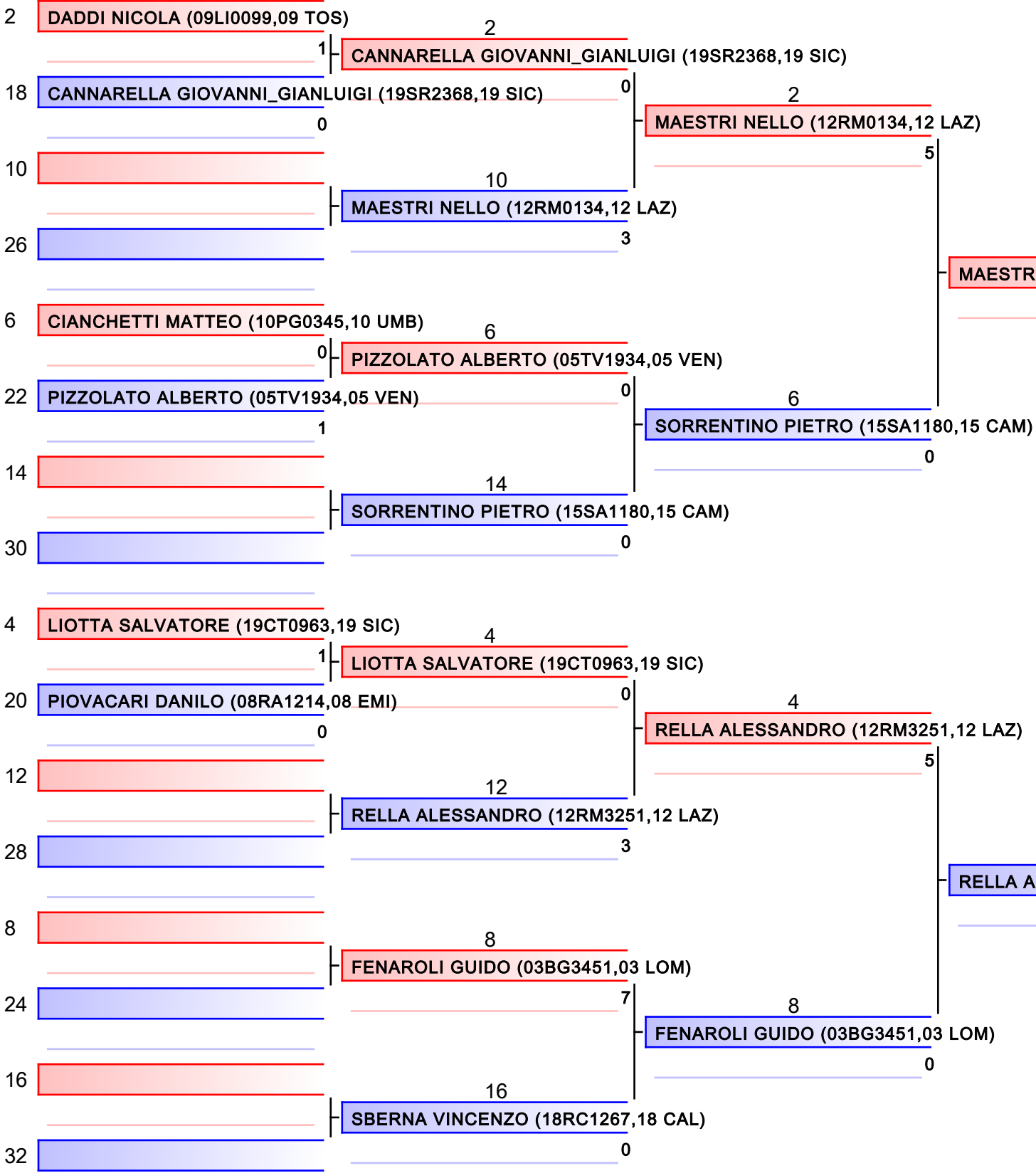
Tatami  
1

Pool  
1/2



- |  |
|--|
| 1. MAESTRI NELLO (12RM0134,12 LAZ)         |
| 2. MARI DANIEL (12RM0061,12 LAZ)           |
| 3. RELLA ALESSANDRO (12RM3251,12 LAZ)      |
| 3. FIORAVANTE VALENTINO (15NA1862,15 CAM)  |
| 5. SORRENTINO PIETRO (15SA1180,15 CAM)     |
| 5. PARINI ALEX (03BS0787,03 LOM)           |
| 7. CANNARELLA GIOVANNI_GIANLUIGI (19SR236) |
| 7. RAMORINO FABIO (01TO3094,01 PIE)        |

Referees:			



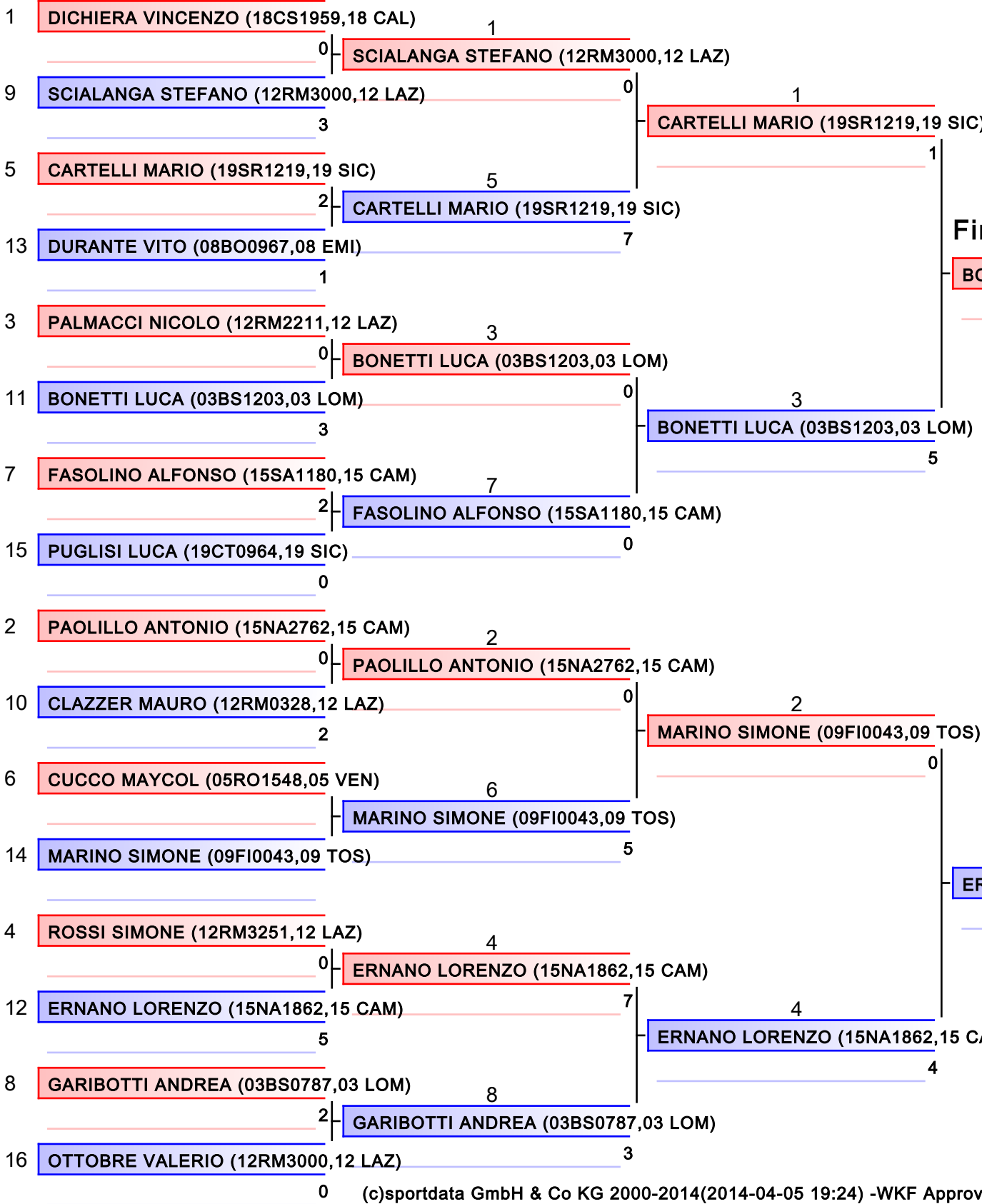
1. MAESTRI NELLO (12RM0134,12 LAZ)
2. MARI DANIEL (12RM0061,12 LAZ)
3. RELLA ALESSANDRO (12RM3251,12 LAZ)
3. FIORAVANTE VALENTINO (15NA1862,15 CAM)
5. SORRENTINO PIETRO (15SA1180,15 CAM)
5. PARINI ALEX (03BS0787,03 LOM)
7. CANNARELLA GIOVANNI_GIANLUIGI (19SR2368,19 SIC)
7. RAMORINO FABIO (01TO3094,01 PIE)

Referees:			

ASS KU M -94 Kg  
49° Campionato Italiano Assoluto M

Tatami  
3

Pool  
1/1



Final

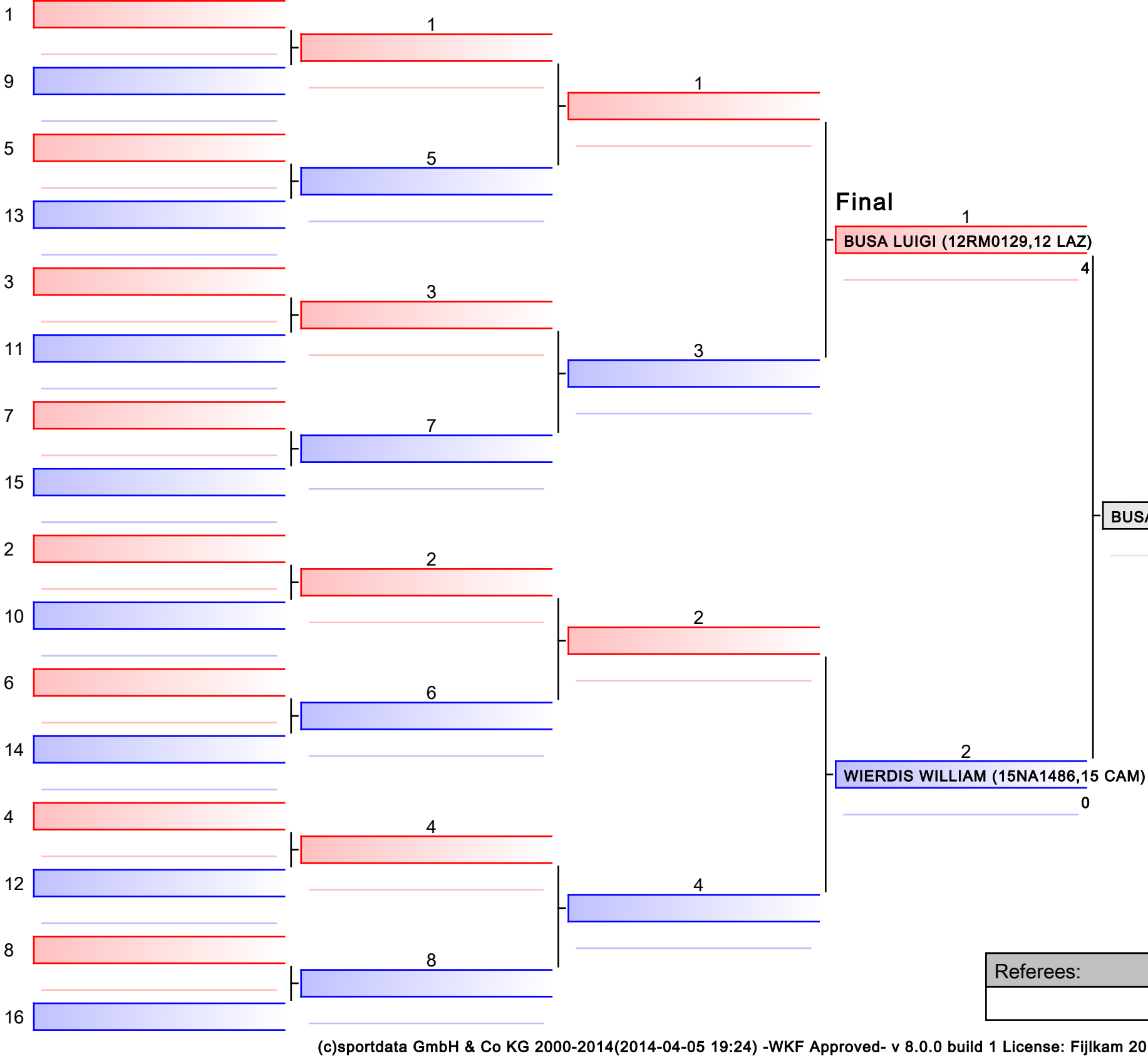
1  
BONETTI LUCA (03BS1203,03 LOM)

ERNANO LORENZO (15NA1862,15 CAM)

- 1. ERNANO LORENZO (15NA1862,15 CAM)
- 2. BONETTI LUCA (03BS1203,03 LOM)
- 3. FASOLINO ALFONSO (15SA1180,15 CAM)
- 3. MARINO SIMONE (09FI0043,09 TOS)
- 5. CARTELLI MARIO (19SR1219,19 SIC)
- 5. GARIBOTTI ANDREA (03BS0787,03 LOM)
- 7. PALMACCI NICOLO (12RM2211,12 LAZ)
- 7. ROSSI SIMONE (12RM3251,12 LAZ)

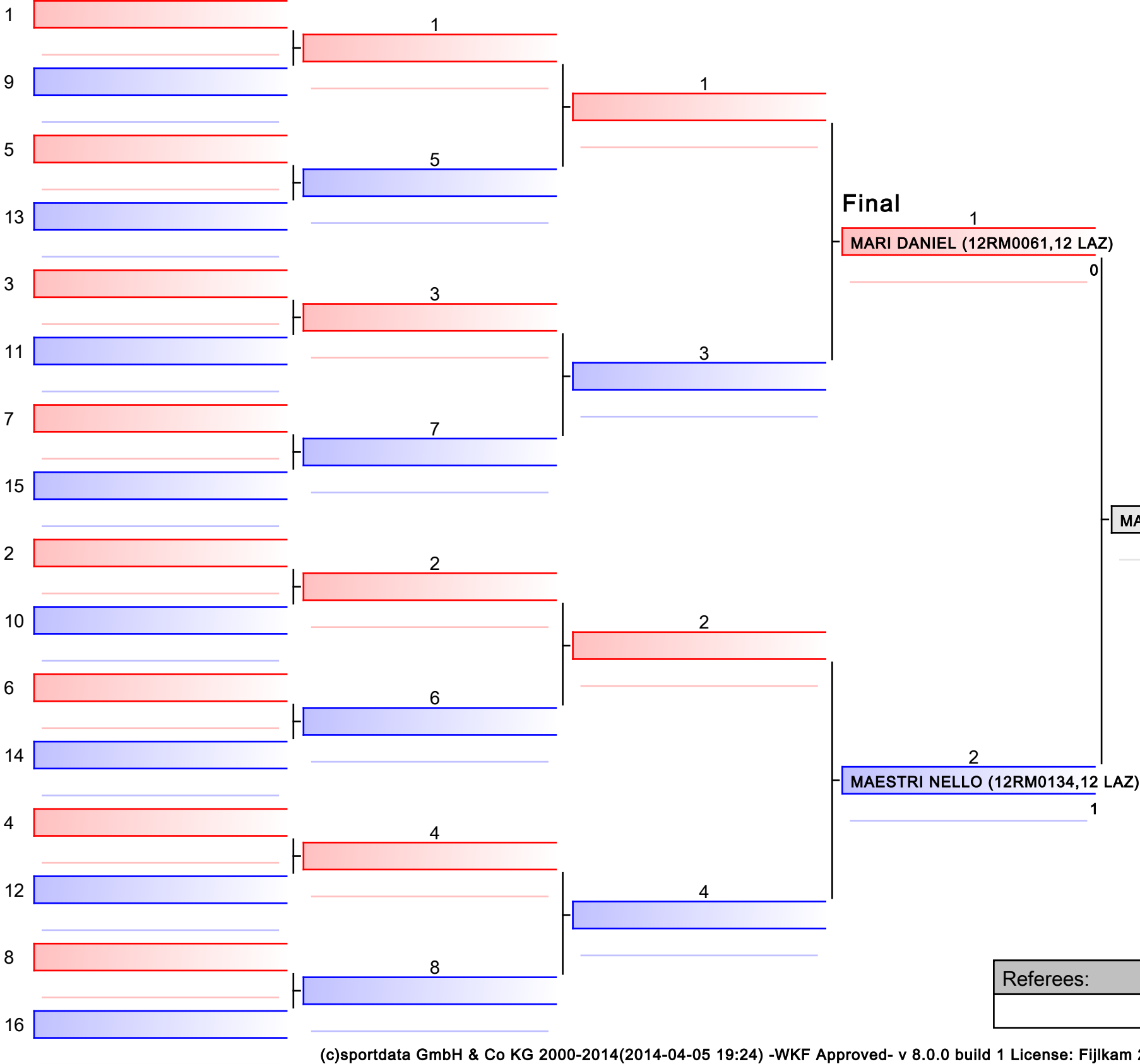


Referees:			



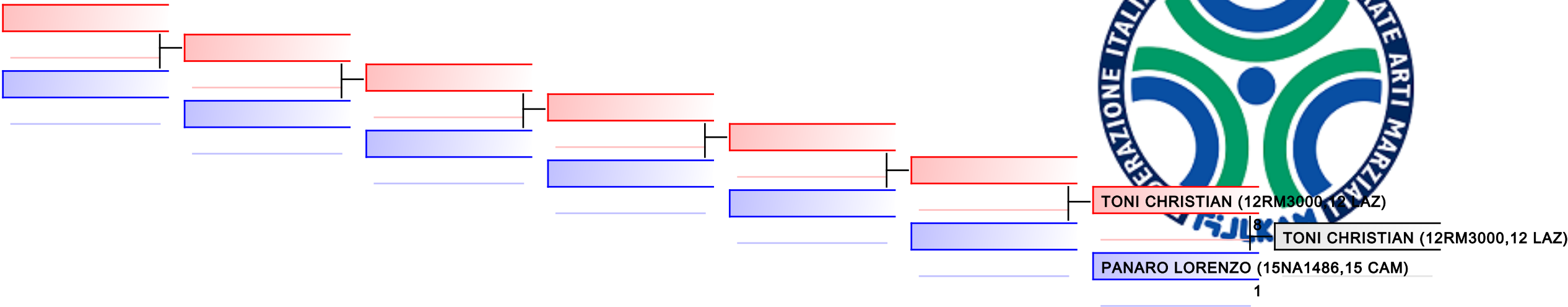
- |  |
|--|
| 1. BUSA LUIGI (12RM0129,12 LAZ)          |
| 2. WIERDIS WILLIAM (15NA1486,15 CAM)     |
| 3. TESORO GIUSEPPE (15NA1486,15 CAM)     |
| 3. GRIMALDI PIERLUIGI (15SA1180,15 CAM)  |
| 5. HASANI MICHELE (03BS1203,03 LOM)      |
| 5. SARNATARO EMANUELE (15NA1486,15 CAM)  |
| 7. CANTATORE MIRKO (16BA1265,16 PUG)     |
| 7. RANZETTI ALESSANDRO (03CR0788,03 LOM) |

Referees:			

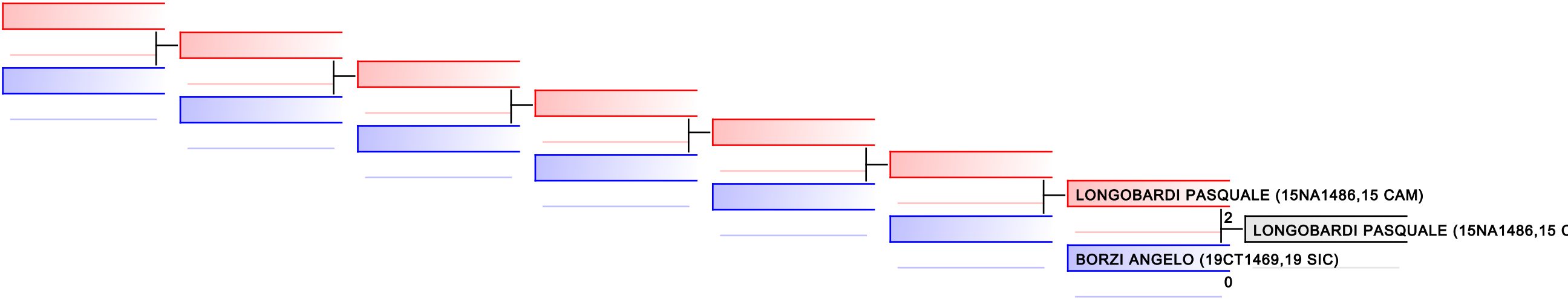


1. MAESTRI NELLO (12RM0134,12 LAZ)
2. MARI DANIEL (12RM0061,12 LAZ)
3. RELLA ALESSANDRO (12RM3251,12 LAZ)
3. FIORAVANTE VALENTINO (15NA1862,15 CAM)
5. SORRENTINO PIETRO (15SA1180,15 CAM)
5. PARINI ALEX (03BS0787,03 LOM)
7. CANNARELLA GIOVANNI_GIANLUIGI (19SR236)
7. RAMORINO FABIO (01TO3094,01 PIE)

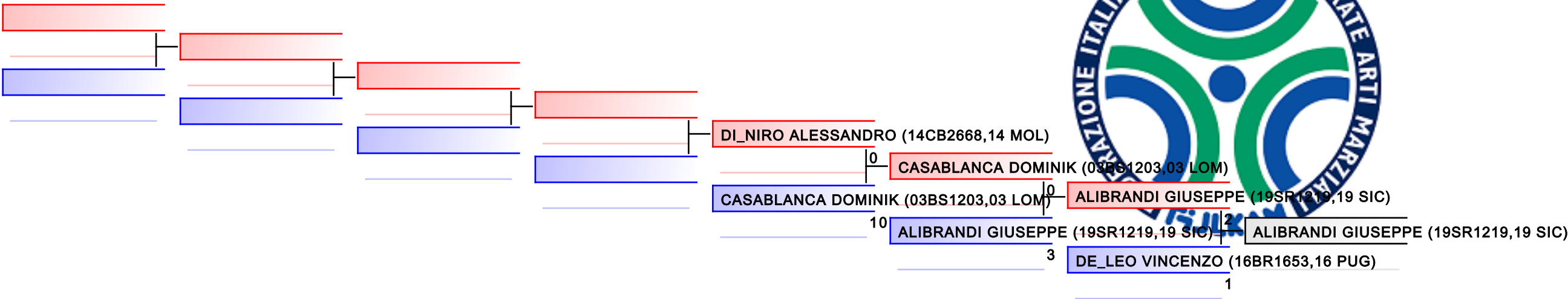
Referees:			



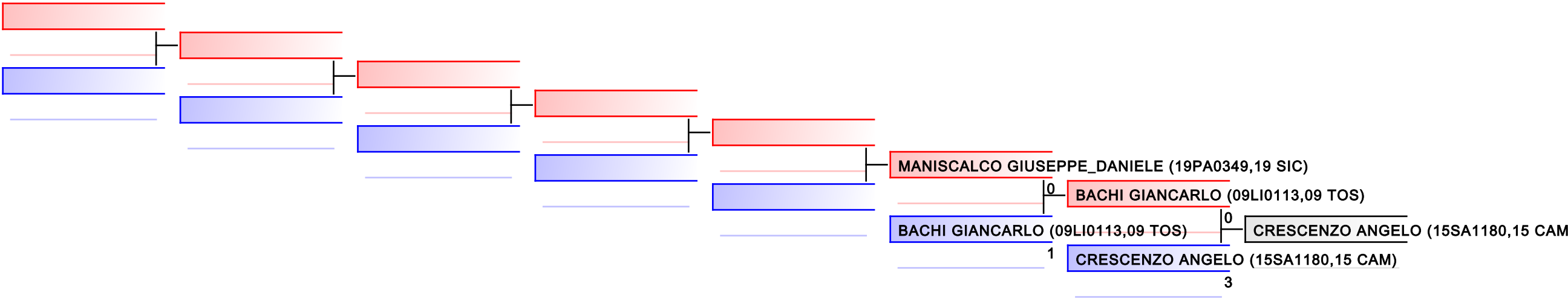
REPECHAGE: ASS KU M +94 Kg(1)



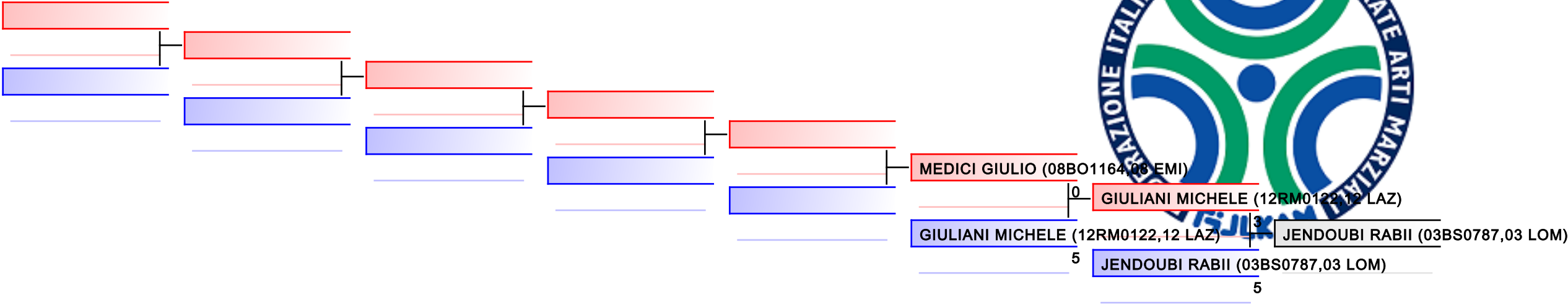
Referees:



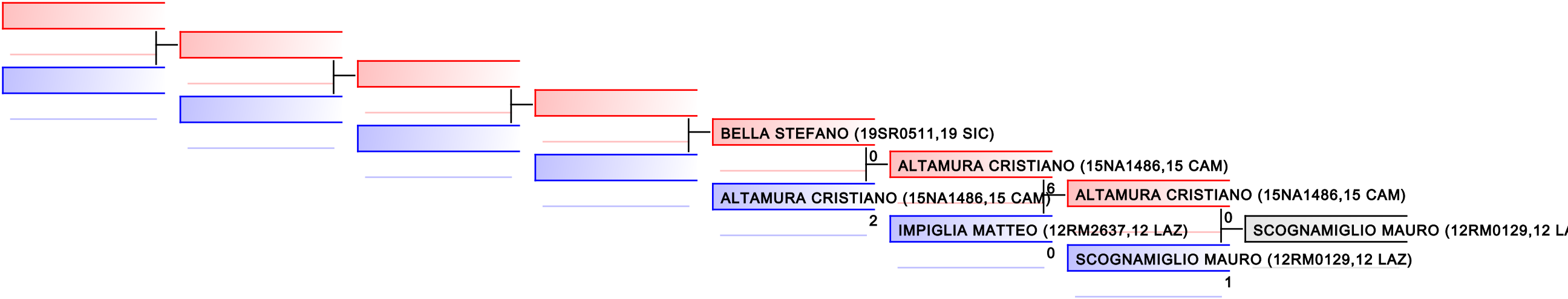
REPECHAGE: ASS KU M -60 Kg(1)



Referees:



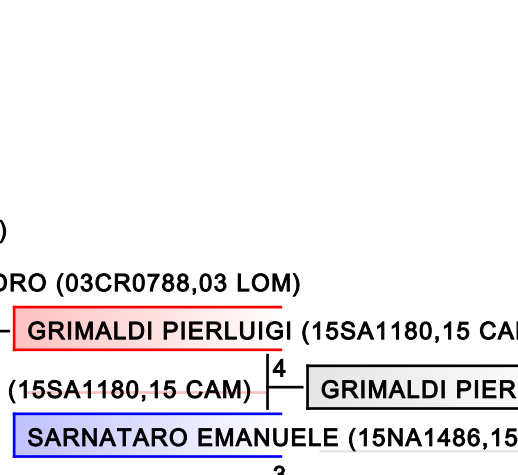
REPECHAGE: ASS KU M -67 Kg(1)



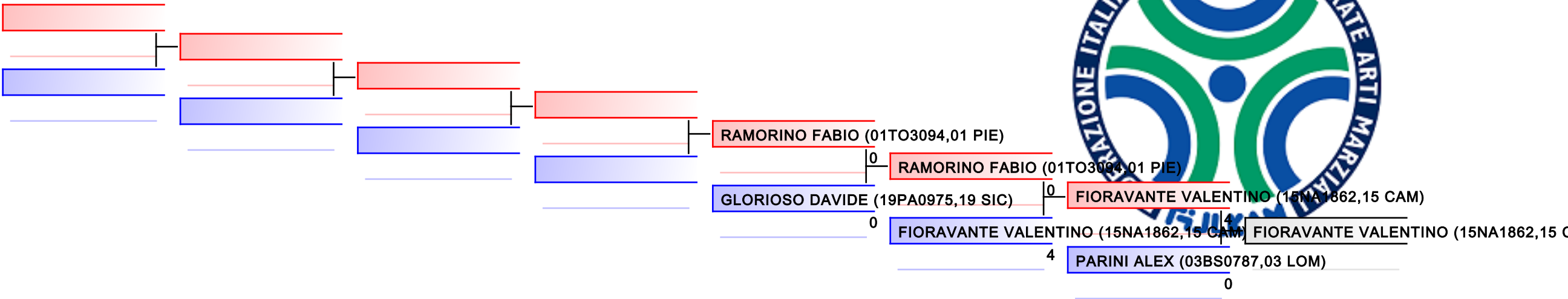
Referees:							
-----------	--	--	--	--	--	--	--



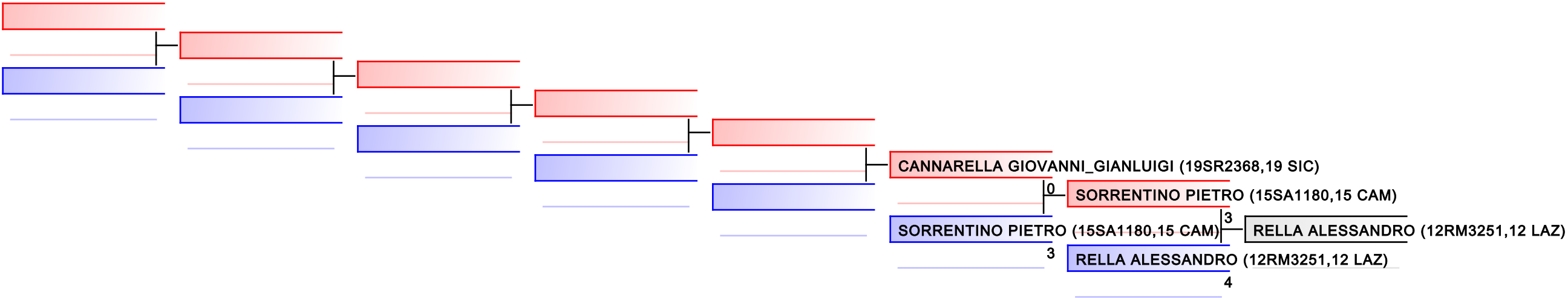
**REPECHAGE: ASS KU M -75 Kg(1,2)**



--	--	--	--	--	--	--

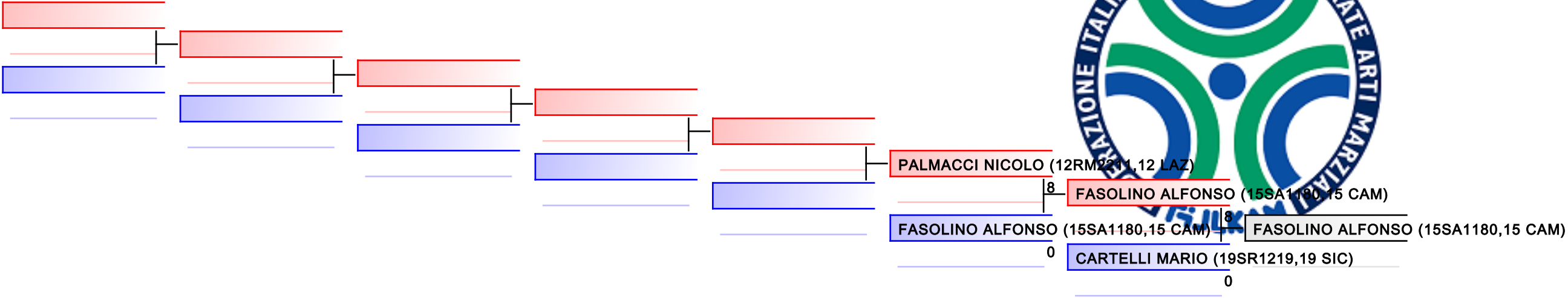


REPECHAGE: ASS KU M -84 Kg(1,2)

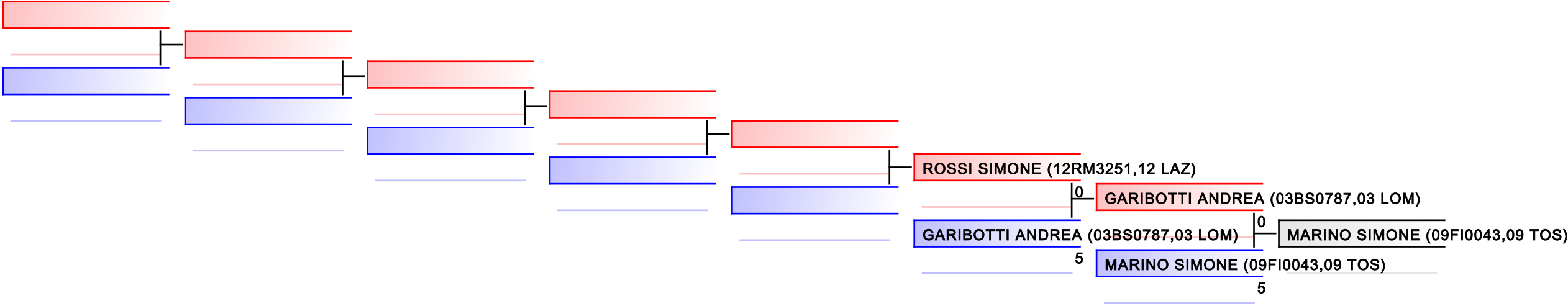


Referees:

--	--	--	--	--	--	--	--



REPECHAGE: ASS KU M -94 Kg(1)



Referees:							
-----------	--	--	--	--	--	--	--